

LASSEN COUNTY TRANSPORTATION COMMISSION



FISCAL YEAR 2015/2016 OVERALL WORK PROGRAM

for the
Continuous Regional Transportation
Planning Process

Adopted May 11, 2015

Larry D. Millar
Executive Secretary

Contents

INTRODUCTION.....	1
ORGANIZATION.....	1
OVERALL WORK PROGRAM (OWP).....	4
Funding Sheet.....	6
Work Element 601 <i>Regional Transportation Planning</i>	7
Work Element 602 <i>Administration and Coordination</i>	8
Work Element 603 <i>Transportation System Planning and Management</i>	9
Work Element 604 <i>Public and Special Transportation</i>	10
Work Element 605 <i>Aviation Facilities</i>	12
Work Element 606 <i>Trail/Pedestrian Facilities</i>	13
Work Element 607 <i>Information Technology</i>	15
Work Element 608 <i>Transit Development Plan (TDP)</i>	17
Work element 612 <i>Vehicular Wayfinding Program</i>	18
Caltrans' Overall Work Program Element	19
Attachment A <i>Annual Certifications and Assurances</i>	20

OVERALL WORK PROGRAM 2015/2016 FISCAL YEAR

INTRODUCTION

Lassen County lies in northeastern California situated at the north end of the Sierra Nevada Range. It is bounded by the State of Nevada to the east and by the Counties of Modoc, Shasta, Sierra and Plumas to the north, west and south, respectively. It is the eighth largest of California's 58 counties with its lower valleys generally above 4,000 feet and mountains rise to heights of 8,200 feet.

Lassen County is 4,690 square miles in total area. The Federal government owns more than half of Lassen County's landmass, including Lassen National Forest to the west, the Sierra Army Depot to the east, and large range and timber tracts that are administered by the Bureau of Land Management. A lesser portion of the county's land resources is State-owned. A small section of Lassen National Volcanic Park lies in the western region of the County.

The City of Susanville is the County Seat and the only incorporated city in Lassen County. Unincorporated community centers include Westwood, Clear Creek, Bieber, Johnstonville, Janesville, Standish, Litchfield, Herlong, Doyle, Milford, Leavitt Lake, Little Valley, Ravendale, Termo and Madeline.

Major highways within the County are U.S. 395 and State Routes (SR) 36, 44, and 139. In addition, State Routes 70, 147, and 299 extend across parts of the County.

ORGANIZATION

The purpose of the FY 2015/2016 Overall Work Program for the Regional Transportation Planning Agency (RTPA), the Lassen County Transportation Commission (LCTC), is to prioritize transportation planning projects when using State and Federal transportation funds. This Overall Work Program responds to Federal, State and local mandates, establishes regional goals, objectives, assesses regional transportation needs, and defines work with other agencies, organizations and individuals on transportation planning issues.

The Lassen County Transportation Commission (LCTC) was formed in 1971 to allocate funds created by Senate Bill 325 (1972). It is made up of three members of the Susanville City Council and three members of the Lassen County Board of Supervisors. Assembly Bill 69 gave the LCTC responsibility for adopting the Regional Transportation Plan (RTP) and AB 402 of 1977 defined elements required in the RTP. AB 620 gave the LCTC responsibility for disbursing State Transit Assistance (STA) Funds. SB 45, effective January 1, 1998, gave the LCTC the responsibility to prioritize projects eligible for State Transportation Improvement Program (STIP) funds.

The LCTC coordinates its activities with the County Planning and Building Services Department, City of Susanville's various departments as well as with other State and Federal government entities. Citizens are encouraged to provide input to identify and solve transportation problems of community concern. Regular public meetings and/or hearings are conducted on a bi-monthly basis.

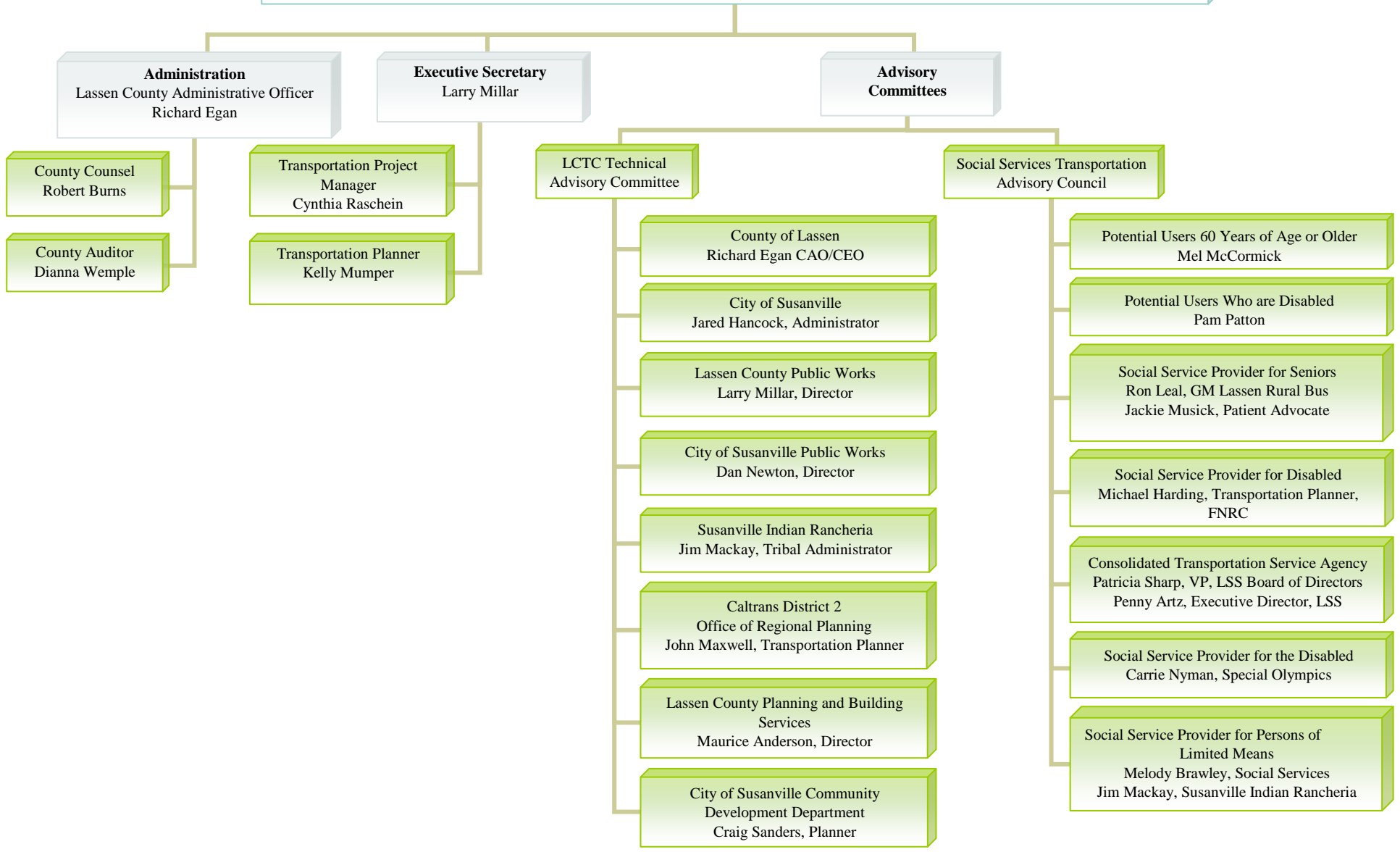
The LCTC has two advisory committees, the LCTC Technical Advisory Committee (LCTC-TAC) and the Social Service Transportation Advisory Council (SSTAC). The LCTC-TAC has been useful in making technical recommendations to the LCTC in prioritizing and programming projects in the Regional Transportation Plan (RTP) and the Regional Transportation Improvement Program (RTIP). The LCTC-TAC enhances the technical capacity of the planning process to support decision making. For 2015/2016 the LCTC-TAC will provide valuable input in the monitoring of the current Regional Transportation Plan.

The Social Service Transportation Advisory Council (SSTAC) advises the LCTC on the annual unmet needs process. At the March 2012 meeting the Commission increased the membership of the SSTAC by including the Susanville Indian Rancheria as a provider of service for persons of limited means. The appointments to the SSTAC occur as required by the Transportation Development Act.

The same members of the LCTC also comprise the Lassen Transit Service Agency (LTSA). The LTSA is responsible for overseeing the operation of the Lassen Rural Bus (LRB) public transit system.

Members of these advisory committees are indicated in the following organization charts.

Lassen County Transportation Commission (LCTC)
 Rod DeBoer, Chairman, (City Council), Aaron Albaugh, Vice Chairman, (County Supervisor),
 Kathie Garnier (City Council), Jim Chapman (County Supervisor),
 Brian Wilson (City Council), Jeff Hemphill (County Supervisor),



OVERALL WORK PROGRAM (OWP)

LCTC is responsible for on-going administration and regional transportation planning for Lassen County. Transportation goals and objectives are considered during the planning and programming processes. Each federal reauthorization specifies planning factors to guide continuing, cooperative and comprehensive transportation planning as on-going activities rather than a single completed action. Typically federal agencies encourage planning organizations to focus work activities on broad planning objectives as relevant to their respective regions and local communities. State and local interests align with those objectives by providing common ground for shared approaches. It is noted that LCTC receives State Regional Planning Assistance funds (no federal funds) and uses the federal planning factors to develop planning goals consistent with our rural needs.

The Lassen County Transportation Commission amends the 2015/2016 work elements as necessary. The primary work efforts are targeted toward transportation systems management and transit system improvements. Major concerns of the LCTC are reflected in the elements and levels of funding in the OWP. The elements identify the overall degree of effort that will be expended to accomplish specific activities with the funds available.

LCTC participates in area task force meetings, and is a member of the North State Super Region, the Rural Counties Task Force, and the Regional Transportation Planning Agency Task Force. The chief regional transportation concerns are to preserve, rehabilitate and improve safety on existing transportation facilities, and to coordinate project sequences and transportation services in order to maximize efficiency and effectiveness of all available funding.

The Federal Planning Factors in Title 23 of the United States Code, Section 134(f) revised in SAFETEA-LU section 6001(h) are as

1. Support the economic vitality of the metropolitan area, especially enabling global competitiveness, productivity and efficiency.
2. Increase the safety of the transportation system for motorized and non-motorized users.
3. Increase the security of the transportation system for motorized and non-motorized users.
4. Increase the accessibility and mobility of people and for freight.
5. Protect and enhance the environment, promote energy conservation, improve the quality of life, and promote consistency between transportation improvements and State and Local planned growth and economic development patterns.
6. Enhance the integration and connectivity of the transportation system, across and between modes, people and freight.
7. Promote efficient system management and operation.
8. Emphasize the preservation of the existing transportation system.

Federal Planning Emphasis Areas (PEAs) are identified by Federal Highway Administration (FHWA) as follows:

1. MAP-21 Implementation
2. Models of Regional Planning Cooperation
3. Ladders of Opportunity

Although not required by FHWA, LCTC has developed the Work Elements to underscore the PEAs in planning efforts for 2015/16. The following funding table identifies the funding sources for each Work Element as well as the PEA that Work Element falls under.

Lassen 15/16 OWP Funding Sheet

Work Element	Description	Planning Factor	Planning Emphasis Area (PEA)	RPA Funds	PPM	LTF Funds	5304 Grant	14/15 RPA Carryover	Total by WE
601	Regional Transportation Planning	1-8	1, 2	4,512	5,000			-	9,512.00
602	Administration	1, 5, 6, 7, 8	1	46,500		60,000		-	106,500.00
603	Transportation System Management	1-8	1-3	74,000	65,000			-	139,000.00
604	Public & Special Transportation	1, 4-8	2, 3	50,372				-	50,372.00
605	Aviation	1, 4-8	2, 3	2,000				-	2,000.00
606	Trail/Pedestrian Facilities	1-8	1-3	20,000				-	20,000.00
607	Information Technology	1, 5-8	1, 2	10,000				-	10,000.00
608	Transportation Development Plan	1-8	1-3	2,616				-	2,616.00
612	Vehicular Wayfinding	1-8	1-3	20,000					20,000.00
Total by Fund				230,000	70,000	60,000	-	-	360,000

Work Element 601 Regional Transportation Planning

Purposes

1. To update elements of the 2012 Regional Transportation Plan (RTP) for planning and reference by staff and Federal, State and local agencies and the public, to ensure compliance with changing requirements.
2. To determine policies, safety needs, deficiencies and improvement programs for streets, roads and highways in the region, coordinating with local partners and Caltrans.
3. To plan, program and monitor the Regional Transportation Improvement Program (RTIP) consistent with RTP, including amendments to ensure that projects are delivered in a timely manner.

Previous Work

The LCTC has updated the Regional Transportation Plan (RTP) with the assistance of a consultant. The LCTC supports the maintenance of data, such as Pavement Management Systems, traffic counts, transit data, and other programs to assist in the development of performance measures and the next RTP. LCTC staff has worked with staff of the City of Susanville to prioritize local projects in the 2014 RTIP submittal. Local rehab projects have been restructured to better meet the targets set in the STIP.

RTIP amendments were made to include safety improvements to State Route 36 (Main Street), Bizz Johnson Trail acquisition and Modoc Line trailhead planning, Lassen Community College emergency access road, Paiute Lane Access to Susanville Ranch Park and a County Wide Vehicular Wayfinding program.

Tasks

1. Review Goals and Policies set forth in the Regional Transportation Plan (RTP), including long-range (20 year) transportation projects
2. Monitor and amend the RTP as needed.
3. Attend CTC meetings as necessary
4. Government-to-Government Outreach to include the Susanville Indian Rancheria

Products (Target due dates are in parentheses)

1. Properly monitored, current, and effective Regional Transportation Program (as needed)
2. RTP amendments, (as needed)

RPA	PPM	LTF	5304	Carryover	Total
4,512.00	5,000	0	0	0	9,512

Work Element 602 Administration and Coordination

Purposes

1. To provide for efficient and effective administration and implementation of programs, projects and funds
2. To support the LCTC and its advisory groups
3. To manage day-to-day operations and ensure compliance with applicable laws, rules and regulations
4. To encourage involvement and feedback during the continuous regional planning process, and to ensure compliance with State and Federal requirements
5. To coordinate regional transportation planning through consultation and collaboration in t

Tasks

1. Prepare OWP, amendments, invoices, and reports for 2015/2016
2. Provide support to Technical Advisory Committee members, Lassen County Transportation Commissioners, stakeholders, and the public
3. Participate in meetings/workshops such as: Lassen County Transportation Commission; Technical Advisory Committee; Caltrans, Rural Counties Task Force, Regional Transportation Planning Agency task force, CTC, CalACT, Rural Transit Assistance Program
4. Coordinate meetings, programs, and activities between County, City, Tribal Governments, and State and Federal agencies to achieve comprehensive planning
5. Prepare annual budget and monitor approved budget; prepare financial and management reports for the LCTC

Products (Target due date are in parentheses)

1. 15/16 OWP Quarterly invoices, reports and related documents (as required)
2. Draft Overall Work Program, FY 16/17 (3/1/16)
3. Final Overall Work Program, FY 16/17 (6/15/16)
4. Annual audits (December 2015)
5. Agendas, minutes, and notices to Transportation Commission (bi-monthly)

RPA	PPM	LTF	5304	Carryover	Total
46,500	0	60,000	0	0	106,500

Work Element 603 *Transportation System Planning and Management*

Purposes

1. To assure the coordination of all modes of transportation within the planning process of Lassen County is accomplished.
2. To perform regional planning activities necessary to ensure safety and security in the transportation planning process.
3. Improve mobility and access using available mass transportation resources

Previous Work:

The tasks performed under this work element include, maintenance of the County’s Pavement Management Program, participation in Rural County Task Force meetings, update of County road inventory, coordination of City, County, Tribal and State development plans, and ongoing participation in the development of Google Transit.

The LCTC has partnered with other Counties in District 2 to coordinate efforts to link regional transit services and allow for on-line trip generation and planning. This trip planning tool makes it possible for riders to connect seamlessly between regional transit providers.

Tasks

1. Maintenance of pavement management systems to establish priorities for projects identified in road inventory (RPA/PPM).
2. Traffic counts and capacity evaluations to assist in preparing the RTIP (RPA/PPM).
3. Update traffic and motor vehicle trends. Maintain Traffic Data to determine levels of service on City/County road ways to assist in preparing the RTIP (PPM).
4. Monitor the functional classifications of City and County roadways; update as necessary (RPA).
5. Coordinate City, County, Tribal and State development plans (RPA).
6. Coordinate with Caltrans on information meetings that discuss impacts of State Route Development/System Management Plans (ie: Susanville Relief Route, US 395) (RPA).
7. Participate, review and comment on Transportation Concept Reports (TCRs), submitted by Caltrans (RPA).
8. Develop and/or modify tools that allow for better assessment of transportation impacts on community livability to be incorporated with the development of the RTP (RPA/PPM).
9. Participate in conferences, trainings and Rural County Task Force meetings to stay current on coordinated transportation planning efforts

Products (Target due dates are in parentheses)

1. Updated current inventory of City and County Roads, including average daily traffic, miles of pavement/gravel, level of service, and functional classifications (6/30/16)
2. District System Management Plan, Transportation Concept Reports (TCRs), Route and Development Plans comment letters (as needed)
3. Up-to-date pavement management system (as needed)

RPA	PPM	LTF	5304	Carryover	Total
74,000	65,000	0	0	0	139,000

Work Element 604 *Public and Special Transportation*

Purposes

1. To improve mobility and access using available mass transportation resources
2. To coordinate among public, private, Tribal and social service transportation providers to improve connectivity, enhance passenger safety, operating efficiency and regional mobility
3. To provide an efficient transit system responsive to the needs of County residents

Previous Work:

LRB expanded service to Southern Lassen County in the Herlong area by creating a second shift (night shift) pilot route to provide transit services to Sierra Army Depot (SIAD) workers who work the night shift. The SIAD employees presented a petition with 35 signatures of workers who were interested in the service. Service began in October 2012, with 4 riders. Ridership peaked in January 2014 with 15 riders and has subsequently dropped and maintained a steady ridership of 6 people. The LTSA has directed staff and Paratransit to continue to monitor usage to determine if this service will become permanent.

The LTSA also has completed upgrades and expansion to the Lassen Rural Bus communication system addressing the FCC mandates of narrow-banding by 2013. The LTSA utilized Prop 1B CalEMA funds allocated to the LCTC and County of Lassen to satisfy the FCC mandates early and their communication system is now fully digital. Completing this task has resulted in a significant improvement to the west county region of the County which previously had sporadic communication capabilities with the West County public transit route service.

Tasks

1. Monitor existing routes to determine if modification is necessary to meet needs or if a new route is needed
2. Continue efforts to provide for second bus to the City Fixed route service to reduce excessive headway times
3. Monitoring of the operations of the Lassen Rural Bus (LRB) public transit system
4. Continue project work including administration of Prop 1B funded projects (PPM)
5. Work on development of Lassen Rural Bus Operations Policy Manual
6. Update/improvements to the public transit system bus route signage installations/updates
7. Continue monitoring and development of new routes.
8. Identify and document transportation facilities, projects and services required to meet regional and interregional mobility access needs.
9. Assess the operational and physical continuity of the regional transportation system components within and between metropolitan and rural areas, and interconnections to and through regions.
10. Investigate methods to reduce vehicle travel and to expand and enhance travel services
11. Conduct collaborative public participation efforts to further extend transportation planning to communities previously not engaged in discussion
12. Identify and address regional transportation issues relating to access to airports, intermodal transportation facilities, major freight distribution routes, national parks, recreation areas, monuments and historic sites, military installations and military base closures

Work Element 604 Public and Special Transportation

Products (Target due dates are in parentheses)

1. Route adjustments and modifications (as needed)
2. Plan and cost estimates related to additional route (6/30/16)
3. Reports to LTSA LRB operations (bi-monthly)
4. Project reports (as required)
5. Draft LRB Policy Manual (6/30/16)
6. Unmet needs resolution. (6/30/16)
7. Short range transit plans specific to individual routes within the transportation system. (as needed)
8. Drug and Alcohol, DBE and Annual Certifications and Assurances (as required)
9. Adopted public participation plan (6/30/16)
10. Maintain and update transit statistical data (monthly)

RPA	PPM	LTF	5304	Carryover	Total
50,372	0	0	0	0	50,372

Work Element 605 Aviation Facilities

Purpose

1. To assist in airport planning studies leading toward upgrading and/or maintaining existing aviation service.

Previous Work

Significant tasks performed under this work element include the monitoring of the Capital Improvement Program for improvements to aviation facilities County wide.

Runway widening and overlay at Ravendale airport are scheduled for completion in 2015/2016. Runway overlay at Herlong Airport is scheduled for completion in 2015/2016.

Runway widening and taxi way enlargement at Spalding were completed in 2012. Crack sealing and striping were completed at Ravendale in 2012. Crack sealing and runway, taxiing and tie down area slurry seal were completed at the Southard Field Airport in 2013.

Several Airport Layout Plans were completed in September 2006, including Spalding, Herlong, Ravendale, and Southard Field (Bieber).

Tasks

1. Coordinate with local officials and Susanville Tribal Government to determine needs for specific projects.
 2. Monitor the updated 6-year program of projects in 2012 RTP.
 3. Continue to support and seek funds for Lassen County and City of Susanville airports.
 4. Prepare and review grant applications.
 5. Update the aviation needs and the development of a ten-year aviation Capital Improvement Plan, for freight and goods movement.
 6. Provide information for California Department of Transportation (Division of Aeronautics), California Aviation System Plan.
 7. Provide information to Lassen County Local Reuse Authority for the Sierra Army Depot coordinating plans to convert Amedee Airfield to civilian use.
 8. Monitor the completed County and City Airport Layout Plans.
 9. Participate in Goods Movement planning activities.
- C. Products (Target due dates are in parentheses)
1. Completed County Airport Layout Plans. (6/30/16)
 2. Updated Aviation Capital Improvement Program. (6/30/16)

RPA	PPM	LTF	5304	Carryover	Total
2,000	0	0	0	0	2,000

Work Element 606 Trail/Pedestrian Facilities

Purpose

1. To assist in pedestrian and bicycle planning studies leading toward new and/or maintaining existing routes.

Previous Work:

Significant tasks performed under this work element include the planning efforts of the Interagency Trail Corridor. These include working with the BLM on an abandoned Union Pacific Rail Line between Alturas and Wendel, conducting the universal trail assessment process on several trails in Susanville Ranch Park, and coordination with local officials to determine needs for specific projects. Work toward the establishment of a trail inventory catalog for trails in the County, specifically in the Susanville Ranch Park, was also completed. The Interagency Trails Coordinator updated the trails map for Susanville Ranch Park to include terrain features that clearly display park resources. A web site for Susanville Ranch Park, brochures, 19 miles of new trails, directional signage, new split rail fencing, new kiosk, and parking area improvements have been completed. A new 60' bridge and trail project (Homestead Bridge) has been completed. Rehabilitation of the Stonewall Trail has been completed. Several dozen benches have been placed throughout the park. 6 small bridges have been placed over intermittent drainages. Many illegal dump sites have been cleaned up.

Other trails within the County are being developed by the Interagency Trail Coordinator who is responsible for the network of recreational trails within Susanville Ranch Park. 14 miles of new non-motorized, multi-use single track trails were planned and constructed in 2008, adding to the 8 miles of existing trails in Susanville Ranch Park. An additional 4 miles were added in 2011 and another mile was completed in June of 2012. The South Side Trail is now completed with on-going single track projects that will parallel old roads, adding to the trail experience. Including the South Side Trail, there are now 34 miles of multi-use, non-motorized single track trails within a 5 minute bicycle ride from Main Street in Susanville. Another new and noteworthy project is a 3 mile single track loop that was completed in April 2014 on Lassen Land and Trails Trust property on Richmond Road.

Signage, maps, brochures, a web site, and parking area improvements were completed in 2010-11. The web site and maps for Susanville Ranch Park were updated in March 2014. The web site now includes substantial content and is viewable on all devices.

In order to remain consistent with the Regional Transportation Plan and to be eligible for funding under the Bicycle Transportation Account Program the LCTC adopted an update to its 1999 Bicycle Master Plan in November of 2012.

“Share the Road” signage was added to 16 County and State roads in Fiscal Year 2005/06, including Richmond Road, which LCTC staff had been asked to evaluate for potential signing. Richmond Road is one of 16 roads identified as bicycle routes in the County.

Work Element 606 Trail/Pedestrian Facilities

Tasks

1. Develop partnerships with local agencies responsible for land use decisions to facilitate coordination of trail facility planning with land use, open space, job housing balance, environmental constraints and growth management.
2. Identify grants for Bicycle Master Plan projects.
3. Continue the work on the County Trails Master Plan.
4. Coordinate with the Susanville Indian Rancheria to assess needs for specific projects and integrate planning efforts.
5. Continue to work with the regional Bicycle Partnership
6. Monitoring of a Trail Maintenance Plan

Products (Target due dates are in parentheses)

1. Monitor Bicycle Master Plan (as needed)
2. Updated inventory catalog for trails in County as new trails are added (on-going).
3. Trail Maintenance Plan (ongoing)
4. Complete Volunteer Trail Patrol and a Trail Inventory Catalog (6/30/16)

RPA	PPM	LTF	5304	Carryover	Total
20,000	0	0	0	0	20,000

Work Element 607 *Information Technology*

Formerly known as GIS, this Work Element is being re-named to encompass all efforts the LCTC will engage in to develop and maintain Information Technology.

Purposes

1. To manage, support and maintain regional advanced technology network
2. To support all work elements and regional transportation planning processes
3. To provide computer, audiovisual and other equipment for communications, data processing and reporting
4. Review planning documents including the RTP for the potential use of Intelligent Transportation Systems (ITS)
5. Coordinate with Caltrans in the development of an ITS architecture and maintenance plan for ITS projects in the region

Previous Work

Significant tasks completed under this work element include the construction of a layer containing traffic count and speed data, maintenance of parcel layers, and training. The GIS system has been used extensively in the preparation of the current Regional Transportation Plan.

The LCTC received Blueprint Planning Grant funds to assist with the update and development of land use and zoning layers in the County General Plan. Planning staff have committed matching in-kind staff time toward this effort and are working with the consultant selected to perform the work.

Blueprint Planning Grant funds are being used to digitize the county's General Plan. This is the first phase in readying the county to do scenario model planning for new development. This is further discussed in Work Element 610.

GPS and GIS were used extensively by the Trails Coordinator planning and designing 18 miles of new trails in Susanville Ranch Park. The planning and design work involved data collection of features, slopes analysis, digital elevation modeling, soils mapping, property boundary verification, and cartography. The technology facilitated an efficient construction process and will be used heavily for on-going trail related projects.

Tasks

1. Coordinate with local officials (BLM, USFS, CDF, City of Susanville, Caltrans District 2, etc.) on available GIS information.
2. Continue with the ongoing maintenance of the GIS base map county-wide.
3. Complete the development of an accurate State, local, and private road system layer on base map.
4. Continue pavement management system data input.
5. Develop inventory of speed zones, traffic signs, and other roadway features.
6. Document environmental and cultural resources, and develop and improve coordination between agencies using GIS's and other computer based tools.
7. Develop or acquire additional GIS layers that pertain to transportation planning, such as, airport layout plans and airport influence boundaries, archeological and historic locations and wetlands sites.

8. Train staff in the use of GIS and other software technologies that will enhance the use of the program for transportation planning.
9. Provide IT support and maintenance for network, websites, domains, equipment, software, hardware, updates, replacement and technical assistance to resolve issues
10. Purchase office and computer equipment as needed

Products (Target due dates are in parentheses)

1. Develop or acquire additional GIS layers that pertain to transportation planning, such as, demographic information, traffic volumes, and others. (6/30/16)
2. Maintain the existing GIS system to include parcels, roads, addresses, and other transportation features. (as needed)
3. Creation of trails system management maps (as needed)
4. Purchase new or update software (as needed)

RPA	PPM	LTF	5304	Carryover	Total
10,000	0	0	0	0	10,000

Work Element 608 Transit Development Plan (TDP)

Purpose

1. To perform the work identified in the Transit Development Plan (TDP) for the region of Lassen County that will include comprehensive goals and objectives to provide an effective, balanced and coordinated transportation system, at a reasonable cost, that serves the needs of all the people in the county, and that supports and helps achieve the goals and land use element of the County General Plan.

Previous Work:

As a result of the previous adopted TDP, the Lassen Transit Service Agency expanded the Lassen Rural Bus (LRB) City Fixed route service an additional hour per day from 10 vehicle revenue service hours (VRSH) to 11 VRSH. In addition, public transit service was extended into Plumas County at the city of Chester. Service during the mid-day run of this route was also extended to Chester. Currently the LRB now provides inter-county service to Chester three times per day five days per week with additional service addition to include Saturdays twice per day.

Current transit providers (Lassen Senior Services, Lassen County Dept. of Social Services, Susanville Indian Rancheria, Veterans, and others) provided input in the development of the TDP to address the needs of the providers and the clientele of the providers. The TDP has compiled statistical and demographic information to identify gaps in existing services, reviewed the Non-Emergency Medical Transportation Plan and addressed the recommendations through a service implementation plan, identified performance measures for assessing the effectiveness of the transit services, made recommendations on how to coordinate services between transit providers and evaluated technology tools for transit coordination and financial tracking and how these tools can be utilized in Lassen County.

Tasks

1. Determine site location for transfer point on City Fixed route service in order to implement route improvements recommended in the 2012 TDP.
2. Determine route alternative design to incorporate service delivery to the VA Medical Clinic into the City Fixed Route.
3. Determine and make recommendation alternative service plans and coordination for improved public transit opportunities.
4. Develop action, capital and financial elements to support recommended strategies.

Products (Target due dates are in parentheses)

1. Inner city transit route proposal (6/30/16)
2. Bus facility expansion (6/30/16)

RPA	PPM	LTF	5304	Carryover	Total
2616	0	0	0	0	2616

Work element 612 Vehicular Wayfinding Program

Purpose

1. To make it easier for residents, commuters and tourists to find destinations and attractions within Lassen County. Wayfinding aims to integrate a range of navigation and communication tools for traversing Lassen County, such as signage, brochures, kiosks and smart-phone applications.

The **project goals** of the Wayfinding Plan include:

- Emphasize Destinations
- Highlight Key Attractions
- Enhance the User’s Experience
- Improve Mobility
- Reinforce Links
- Reinforce Community Identity
- Develop a System that can be implemented

Previous Work

This is a new Work Element. However, as the County continues to build its infrastructure and enhance the quality of life for its growing resident and business population, it has identified the implementation of a Wayfinding Program as an initiative that will enhance the experience for everyone. The development of an overall wayfinding philosophy and graphic standard can provide valuable information and communicate an organized and friendly County, without detracting from its visual beauty. In contrast, ignoring or having an unregulated, haphazard approach to this issue will only create sign clutter, less efficient navigation and an unwelcoming perception of the County. The aim of this Program is to create an overall wayfinding philosophy for Lassen County, identify a variety of possible wayfinding tools, analyze existing conditions in Lassen County and develop a set of graphic standards that can be implemented, enforced and maintained over time.

A. Purpose

Wayfinding explores ways to navigate from one place to another, and focuses on highlighting the experience of the path and eventual arrival of the wayfinding user. The system will underscore Lassen County’s unique identity, as well as improve movement for motorists

B. Tasks

1. Identify Partner Agencies and Community Members
2. Public Participation Meetings
3. Draft and Final Plan for adoption
4. Present Plan to Partner Agencies

C. Products (Target due dates are in parentheses)

1. Wayfinding Plan for the City of Susanville (6/30/16)
2. Wayfinding Plan for Lassen County (6/30/16)

RPA	PPM	LTF	5304	Carryover	Total
20,000	0	0	0	0	20,000

**Caltrans' Overall Work Program Element
Fiscal Year 2015/2016**

Activity Description	Product	Funding Source	Due Date
Coordinate with LCTC staff on update of Regional Transportation Plan (RTP)	Lassen County RTP	State & Federal Funds	FY 15/16 and ongoing
Assist RTPA staff with programming documents for their RTIP amendments	Lassen County RTIP	State & Federal Funds	FY 15/16 and ongoing
Monitor OWP work progress, process OWP invoices for payment, including grant progress	Payment of Invoices Various Transit grants	State & Federal Funds	FY 15/16 and ongoing
System Management	<ul style="list-style-type: none"> • TCR update • CTIS database • ITMS database 	State & Federal Funds	FY 15/16
Lassen County Intelligent Transportation System (ITS) Architecture	Lassen ITS Architecture Plan Coordination	State & Federal Funds	FY 15/16 and ongoing
Assist LCTC Staff in outreach and participation by Native American Tribal Governments	Participation by Tribes in the Transportation Planning Process	State & Federal Funds	FY 15/16 and ongoing
Multi-modal Planning Coordination	<ul style="list-style-type: none"> • Aeronautics • Bicycle Plan • Transit Planning • Pedestrian • ADA Accessibility 	State & Federal Funds	FY 15/16
Coordination with LCTC Staff on miscellaneous transportation related issues	<ul style="list-style-type: none"> • Public Participation • Greenhouse Gas/ Air Quality • Intergovernmental Review 	State & Federal Funds	FY 15/16

Attachment A *Annual Certifications and Assurances*

- Fiscal Year 2015/2016 California Department of Transportation Debarment and Suspension Certification
- FTA Fiscal Year 2015 Certifications and Assurances
- FY 2015/2016 State Transportation Planning Process Certification
- FY 2015/2016 FHWA RTPA Metropolitan Transportation Planning Process Certification